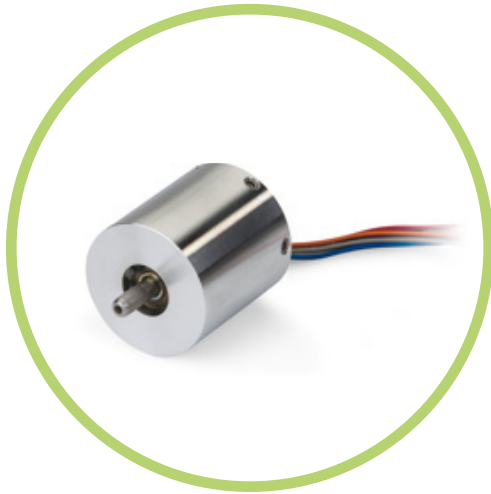




| HOUSED BRUSHLESS DC (BLDC) MOTORS

Introduction

BEI Kimco's permanent magnet housed brushless DC motors have proven to be the most reliable and cost effective solutions for some of the most demanding medical, industrial, military and aerospace applications. We offer a wide range of electrical and mechanical interface options to support the most efficient integration of our products within our customer's assembly. Our proprietary design algorithms allow us to fine tune the motor's magnetic circuit to achieve a desirable balance between torque, speed and thermal performance.



Features

- Precision high speed balanced rotor assemblies for smooth operation
- Precision ball bearings for improved life and reliability
- Low cogging options for reduced vibration
- Proprietary low loss magnetic circuit designs
- Patented audible noise reduction techniques

SPECIFICATIONS

Part Number	Peak Torque (N-m / oz-in)	Continuous Stall Torque (N-m / oz-in)	Motor Constant (N-m/ $\sqrt{\text{watts}}$) / (oz-in/ $\sqrt{\text{watts}}$)	Weight (g / oz)
DIH11-19-BDNA	0.056 / 8	0.025 / 3.5	0.007 / 1.1	87.9 / 3.1
DIH14-20-BDYA	0.105 / 15	0.042 / 6	0.014 / 1.95	170.1 / 6
DIH18-14-BBNA	0.085 / 12	0.03 / 4.3	0.007 / 1.1	147.4 / 5.2
DIH23-13-BDNA	0.17 / 24	0.055 / 7.8	0.017 / 2.5	229.6 / 8.1
DIH23-16-BDNA	0.28 / 40	0.11 / 16.2	0.034 / 4.76	317.5 / 11.2
DIH23-19-BDNA	0.35 / 50	0.157 / 22.3	0.044 / 6.22	413.9 / 14.6
DIH23-22-BDNA	0.56 / 80	0.21 / 30	0.051 / 7.2	527.3 / 186
DIH23-25-001A	0.7 / 100	0.22 / 32	0.055 / 7.8	510.3 / 18
DIH23-30-007A	1.76 / 250	0.38 / 54	0.095 / 13.5	793.8 / 28
DIN34-32-CDYA	2.47 / 350	0.95 / 135	0.164 / 23.3	1871.1 / 66

Sensata Technologies, Inc. ("Sensata") data sheets are solely intended to assist designers ("Buyers") who are developing systems that incorporate Sensata products (also referred to herein as "components"). Buyer understands and agrees that Buyer remains responsible for using its independent analysis, evaluation and judgment in designing Buyer's systems and products. Sensata data sheets have been created using standard laboratory conditions and engineering practices. Sensata has not conducted any testing other than that specifically described in the published documentation for a particular data sheet. Sensata may make corrections, enhancements, improvements and other changes to its data sheets or components without notice.

Buyers are authorized to use Sensata data sheets with the Sensata component(s) identified in each particular data sheet. HOWEVER, NO OTHER LICENSE, EXPRESS OR IMPLIED, BY ESTOPPEL OR OTHERWISE TO ANY OTHER SENSATA INTELLECTUAL PROPERTY RIGHT, AND NO LICENSE TO ANY THIRD PARTY TECHNOLOGY OR INTELLECTUAL PROPERTY RIGHT, IS GRANTED HEREIN. SENSATA DATA SHEETS ARE PROVIDED "AS IS". SENSATA MAKES NO WARRANTIES OR REPRESENTATIONS WITH REGARD TO THE DATA SHEETS OR USE OF THE DATA SHEETS, EXPRESS, IMPLIED OR STATUTORY, INCLUDING ACCURACY OR COMPLETENESS. SENSATA DISCLAIMS ANY WARRANTY OF TITLE AND ANY IMPLIED WARRANTIES OF MERCHANTABILITY, FITNESS FOR A PARTICULAR PURPOSE, QUIET ENJOYMENT, QUIET POSSESSION, AND NON-INFRINGEMENT OF ANY THIRD PARTY INTELLECTUAL PROPERTY RIGHTS WITH REGARD TO SENSATA DATA SHEETS OR USE THEREOF.

All products are sold subject to Sensata's terms and conditions of sale supplied at www.sensata.com SENSATA ASSUMES NO LIABILITY FOR APPLICATIONS ASSISTANCE OR THE DESIGN OF BUYERS' PRODUCTS. BUYER ACKNOWLEDGES AND AGREES THAT IT IS SOLELY RESPONSIBLE FOR COMPLIANCE WITH ALL LEGAL, REGULATORY AND SAFETY-RELATED REQUIREMENTS CONCERNING ITS PRODUCTS, AND ANY USE OF SENSATA COMPONENTS IN ITS APPLICATIONS, NOTWITHSTANDING ANY APPLICATIONS-RELATED INFORMATION OR SUPPORT THAT MAY BE PROVIDED BY SENSATA.

Mailing Address: Sensata Technologies, Inc., 529 Pleasant Street, Attleboro, MA 02703, USA.

CONTACT US

Americas

+1 (760) 597 7042
sales.beikimco@sensata.com
Europe, Middle East & Africa
+1 (760) 597 7042
support@sensata.com

Asia Pacific

sales.isasia@list.sensata.com
China +86 (21) 2306 1500
Japan +81 (45) 277 7117
Korea +82 (31) 601 2004
India +91 (80) 67920890
Rest of Asia +603-5566 6001